

# FCC TEST REPORT

Prepared for :

**EDA Technology Shanghai Co.,Ltd**

**Building 29, No.1661 Jialuo Road, Jiading District, Shanghai, PRC**

**Product Name: CM5 AI CAMERA**

**Trade Mark: EDATEC**

**Product Model (S): ED-AIC3100**

**Date of Test: Apr. 01, 2026 – Apr. 23, 2026**

**Date of Report: Apr. 23, 2026**

**Report Number: HK2604010382-1ER**

Prepared By :

**Shenzhen HUAKE Testing Technology Co., Ltd.**

**1-2/F., Building B2, Junfeng Zhongcheng Zhizao Innovation Park, Heping,**

**Fuhai Street, Bao'an District, Shenzhen, Guangdong, China**

## TEST REPORT VERIFICATION

Applicant : EDA Technology Shanghai Co.,Ltd  
Address : Building 29, No.1661 Jialuo Road, Jiading District, Shanghai, PRC  
Manufacturer : EDA Technology Shanghai Co.,Ltd  
Address : Building 29, No.1661 Jialuo Road, Jiading District, Shanghai, PRC  
Product Name : CM5 AI CAMERA  
(A) Product Model : ED-AIC3100  
(B) Series Model : N/A  
(C) Power Supply : DC 24V From Adapter with AC 100-240V, 50/60Hz

Standards ..... FCC Part 15 Subpart B  
ANSI C63.4

This device described above has been tested by HUAK, and the test results show that the equipment under test (EUT) is in compliance with Part 15 of FCC Rules. And it is applicable only to the tested sample identified in the report.

This report shall not be reproduced except in full, without the written approval of HUAK, this document may be altered or revised by HUAK, personal only, and shall be noted in the revision of the document.

Test Result ..... **Pass**

Date of Test: Apr. 01, 2026 – Apr. 23, 2026

Prepared by: Kevin Pan  
Project Engineer

Reviewed by: Silver Wong  
Project Supervisor

Approved by: Jason Zhou  
Technical Director

**Table of Contents**

	<b>Page</b>
<b>1 . TEST SUMMARY</b>	<b>5</b>
1.1 TEST FACILITY	6
1.2 MEASUREMENT UNCERTAINTY	6
<b>2 . GENERAL INFORMATION</b>	<b>7</b>
2.1 GENERAL DESCRIPTION OF EUT	7
2.2 DESCRIPTION OF TEST MODES	8
2.3 DESCRIPTION OF TEST SETUP	9
2.4 DESCRIPTION TEST PERIPHERAL AND EUT PERIPHERAL	10
2.5 MEASUREMENT INSTRUMENTS LIST	11
<b>3 . EMC EMISSION TEST</b>	<b>12</b>
3.1 CONDUCTED EMISSION MEASUREMENT	12
3.1.1 POWER LINE CONDUCTED EMISSION	12
3.1.2 TEST PROCEDURE	13
3.1.3 TEST SETUP	13
3.1.4 EUT OPERATING CONDITIONS	13
3.1.5 TEST RESULTS	14
3.2 RADIATED EMISSION MEASUREMENT	16
3.2.1 LIMITS OF RADIATED EMISSION MEASUREMENT	16
3.2.2 TEST PROCEDURE	16
3.2.3 TEST SETUP	17
3.2.4 EUT OPERATING CONDITIONS	17
3.2.5 TEST RESULTS(30MHz~1000MHz)	18
3.2.6 TEST RESULTS(Above 1GHz)	20
<b>4 . EUT TEST PHOTO</b>	<b>22</b>
<b>ATTACHMENT PHOTOGRAPHS OF EUT</b>	<b>23</b>

**\*\* Issued History \*\***

Revision	Description	Issued Date	Remark
Revision 1.0	Initial Test Report Release	2026/04/23	Jason Zhou



### 1. TEST SUMMARY

Test procedures according to the technical standards:

EMC Emission				
Standard	Test Item	Limit	Judgment	Remark
FCC Part 15 Subpart B ANSI C63.4	Conducted Emission	Class A	PASS	
	Radiated Emission	Class A	PASS	

**NOTE:**

- (1) 'N/A' denotes test is not applicable in this Test Report
- (2) For client's request and manual description, the test will not be executed.

Note: This equipment has been tested and found to comply with the limits for a Class A digital device, pursuant to part 15 of the FCC Rules. These limits are designed to provide reasonable protection against harmful interference when the equipment is operated in a commercial environment. This equipment generates, uses, and can radiate radio frequency energy and, if not installed and used in accordance with the instruction manual, may cause harmful interference to radio communications. Operation of this equipment in a residential area is likely to cause harmful interference in which case the user will be required to correct the interference at his own expense

### 1.1 TEST FACILITY

Shenzhen HUAK Testing Technology Co., Ltd.  
 Add. : 1-2/F., Building B2, Junfeng Zhongcheng Zhizao Innovation Park, Heping, Fuhai Street,  
 Bao'an District, Shenzhen, Guangdong, China

### 1.2 MEASUREMENT UNCERTAINTY

The reported uncertainty of measurement  $y \pm U$  , where expanded uncertainty  $U$  is based on a standard uncertainty multiplied by a coverage factor of  $k=2$  , providing a level of confidence of approximately **95 %**.

#### A. Conducted Measurement :

Measurement Frequency Range	Uncertainty	NOTE
150kHz ~ 30MHz	±2.22dB	

#### B. Radiated Measurement :

Measurement Frequency Range	Uncertainty	NOTE
30 ~ 1000MHz	±3.60dB	
1 ~ 6GHz	±3.86dB	



## 2. GENERAL INFORMATION

### 2.1 GENERAL DESCRIPTION OF EUT

Product Name	CM5 AI CAMERA	
Product Model	ED-AIC3100	
Series Model	N/A	
Model Difference	N/A	
Product Description	The EUT is a CM5 AI CAMERA.	
	Operating frequency:	N/A
	Connecting I/O port:	N/A
Power Source	DC Voltage	
Power Rating	DC 24V From Adapter with AC 100-240V, 50/60Hz	



## 2.2 DESCRIPTION OF TEST MODES

To investigate the maximum EMI emission characteristics generates from EUT, the test system was pre-scanning tested base on the consideration of following EUT operation mode or test configuration mode which possible have effect on EMI emission level. Each of these EUT operation mode(s) or test configuration mode(s) mentioned above was evaluated respectively.

Pretest Mode	Description
Mode 1	Working

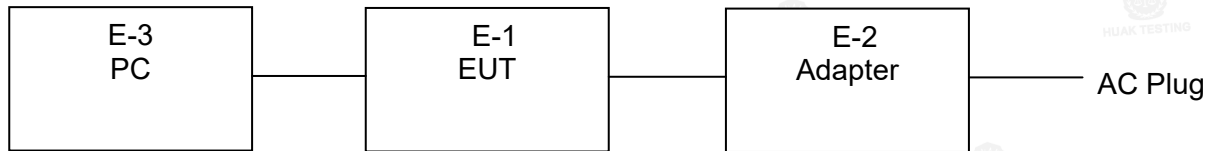
For Conducted Test	
Final Test Mode	Description
Mode 1	Working

For Radiated Test	
Final Test Mode	Description
Mode 1	Working



### 2.3 DESCRIPTION OF TEST SETUP

Mode 1:





2.4 DESCRIPTION TEST PERIPHERAL AND EUT PERIPHERAL

The EUT has been tested as an independent unit together with other necessary accessories or support units. The following support units or accessories were used to form a representative test configuration during the tests.

Item	Equipment	Trade Mark	Model/Type No.	Series No.	Note
E-1	CM5 AI CAMERA	EDATEC	ED-AIC3100	N/A	EUT
E-2	Adapter	N/A	GSM60A24	N/A	
E-3	PC	Lenovo	ThinkPad E14	N/A	

Item	Shielded Type	Ferrite Core	Length	Note

Note:

- (1) The support equipment was authorized by Declaration of Confirmation.
- (2) For detachable type I/O cable should be specified the length in cm in 『Length』 column.
- (3) “YES” is means “shielded” “with core”; “NO” is means “unshielded” “without core”.



**2.5 MEASUREMENT INSTRUMENTS LIST**

Item	Test Equipment	Manufacturer	Type No.	Serial No.	Calibration Date	Cal. Due
1.	L.I.S.N.	R&S	ENV216	HKE-002	2026.02.11	2027.02.10
2.	L.I.S.N.	R&S	ENV216	HKE-059	2026.02.04	2027.02.03
3.	EMI Test Receiver	R&S	ESR-7	HKE-005	2026.02.06	2027.02.05
4.	Spectrum analyzer	Agilent	N9020A	HKE-048	2026.02.06	2027.02.05
5.	Preamplifier	Schwarzbeck	EMC05184 5S	HKE-006	2026.02.06	2027.02.05
6.	Preamplifier	Schwarzbeck	BBV 9745	HKE-168	2026.02.04	2027.02.03
7.	6d Attenuator	Pasternack	6db	HKE-185	2026.02.06	2027.02.05
8.	EMI Test Receiver	R&S	ESR-7	HKE-161	2026.02.06	2027.02.05
9.	Broadband Antenna	Schwarzbeck	VULB9168	HKE-167	2026.02.06	2028.02.05
10.	Loop Antenna	COM-POWER	AL-130R	HKE-014	2026.02.06	2028.02.05
11.	Horn Antenna	Schwarzbeck	9120D	HKE-013	2026.02.06	2028.02.05
12.	EMI Test Software	Tonscend	JS32-CE 2.5.0.6	HKE-081	/	/
13.	EMI Test Software	Tonscend	JS32-RE 5.0.0	HKE-082	/	/

The results shown in this test report refer only to the sample(s) tested unless otherwise stated and the sample(s) are retained for 15 days only. The document is issued by Shenzhen HUAK Testing Technology Co., Ltd., this document cannot be reproduced except in full with our prior written permission.



### 3. EMC EMISSION TEST

#### 3.1 CONDUCTED EMISSION MEASUREMENT

##### 3.1.1 POWER LINE CONDUCTED EMISSION (Frequency Range 150kHz~30MHz)

FREQUENCY (MHz)	Class A (dBuV)		Class B (dBuV)	
	Quasi-peak	Average	Quasi-peak	Average
0.15 ~ 0.5	79.00	66.00	66 ~ 56 *	56 ~ 46 *
0.50 ~ 5.0	73.00	60.00	56.00	46.00
5.0 ~ 30.0	73.00	60.00	60.00	50.00

Note:

(1) The tighter limit applies at the band edges.

(2) The limit of " \* " marked band means the limitation decreases linearly with the logarithm of the frequency in the range.

The following table is the setting of the receiver

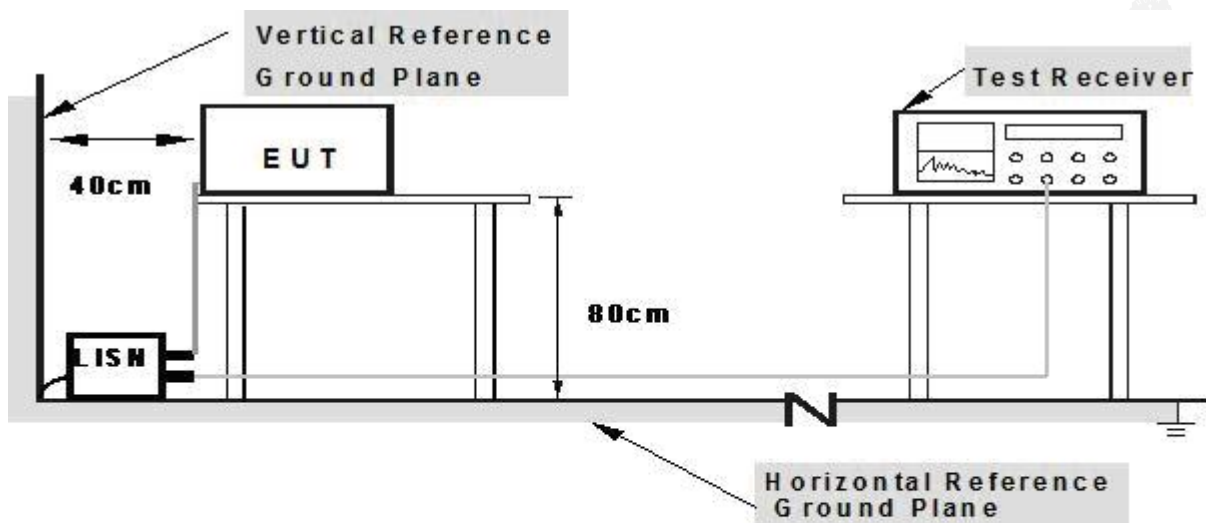
Receiver Parameters	Setting
Attenuation	10 dB
Start Frequency	0.15 MHz
Stop Frequency	30 MHz
IF Bandwidth	9 kHz



### 3.1.2 TEST PROCEDURE

- a. The EUT was placed 0.8 meters from the horizontal ground plane with EUT being connected to the power mains through a line impedance stabilization network (LISN). All other support equipments powered from additional LISN(s). The LISN provide 50 Ohm/ 50uH of coupling impedance for the measuring instrument.
- b. Interconnecting cables that hang closer than 40 cm to the ground plane shall be folded back and forth in the center forming a bundle 30 to 40 cm long.
- c. I/O cables that are not connected to a peripheral shall be bundled in the center. The end of the cable may be terminated, if required, using the correct terminating impedance. The overall length shall not exceed 1 m.
- d. LISN at least 80 cm from nearest part of EUT chassis.
- e. For the actual test configuration, please refer to the related Item –EUT Test Photos.

### 3.1.3 TEST SETUP



- Note: 1. Support units were connected to second LISN.**
- 2. Both of LISN's (AMN) are 80 cm from EUT and at least 80 from other units and other metal planes**

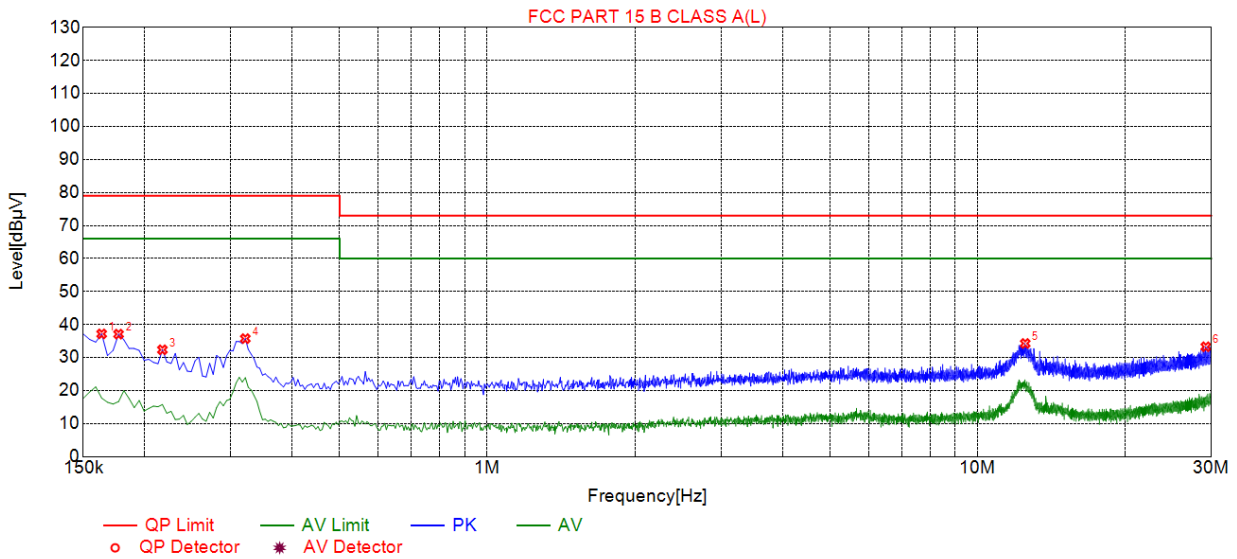
### 3.1.4 EUT OPERATING CONDITIONS

The EUT tested system was configured as the statements of 2.3 Unless otherwise a special operating condition is specified in the follows during the testing.



3.1.5 TEST RESULTS

EUT :	CM5 AI CAMERA	Model Name. :	ED-AIC3100
Temperature :	24.1 °C	Relative Humidity :	55%
Pressure :	1010 hPa	Test Date :	2026-04-08
Test Mode :	Mode 1	Polarization :	L
Test Voltage :	DC 24V From Adapter		



Suspected List								
NO.	Freq. [MHz]	Level [dBµV]	Factor [dB]	Limit [dBµV]	Margin [dB]	Reading [dBµV]	Detector	Type
1	0.1635	37.17	19.82	79.00	41.83	17.35	PK	L
2	0.1770	37.10	19.80	79.00	41.90	17.30	PK	L
3	0.2175	32.36	19.76	79.00	46.64	12.60	PK	L
4	0.3210	35.74	19.79	79.00	43.26	15.95	PK	L
5	12.5160	34.27	21.64	73.00	38.73	12.63	PK	L
6	29.2290	33.27	25.29	73.00	39.73	7.98	PK	L

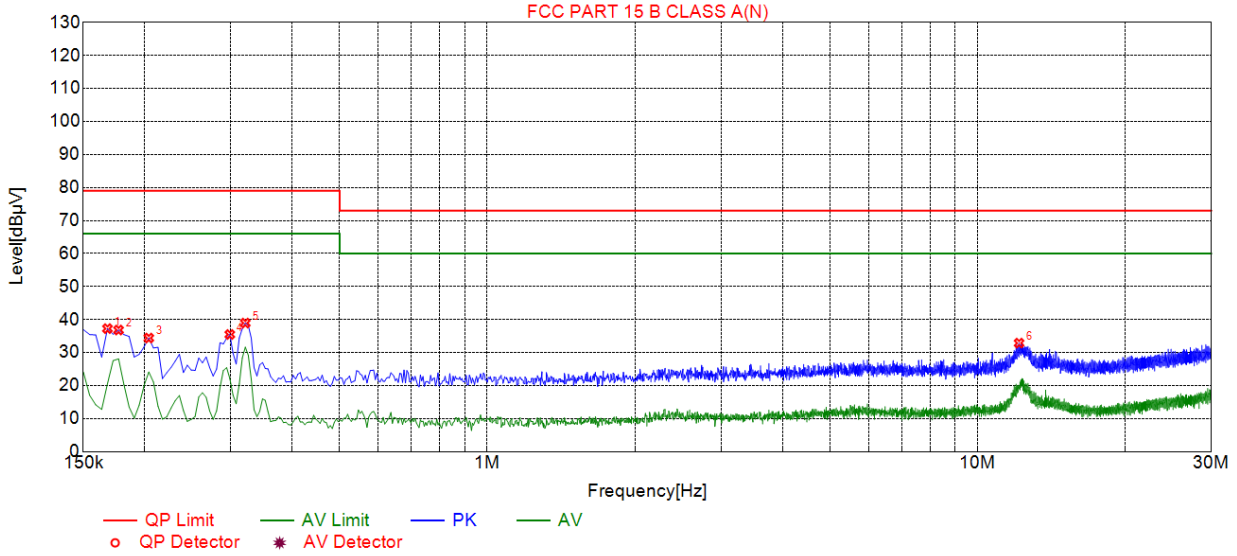
Remark: Margin = Limit – Level

Correction factor = Cable lose + LISN insertion loss

Level=Test receiver reading + correction factor



EUT :	CM5 AI CAMERA	Model Name. :	ED-AIC3100
Temperature :	24.1 °C	Relative Humidity :	55%
Pressure :	1010 hPa	Test Date :	2026-04-08
Test Mode :	Mode 1	Polarization :	N
Test Voltage :	DC 24V From Adapter		



Suspected List								
NO.	Freq. [MHz]	Level [dBµV]	Factor [dB]	Limit [dBµV]	Margin [dB]	Reading [dBµV]	Detector	Type
1	0.1680	37.26	19.88	79.00	41.74	17.38	PK	N
2	0.1770	36.83	19.84	79.00	42.17	16.99	PK	N
3	0.2040	34.40	19.75	79.00	44.60	14.65	PK	N
4	0.2985	35.48	19.82	79.00	43.52	15.66	PK	N
5	0.3210	38.94	19.83	79.00	40.06	19.11	PK	N
6	12.1605	32.86	21.43	73.00	40.14	11.43	PK	N

Remark: Margin = Limit – Level

Correction factor = Cable lose + LISN insertion loss

Level=Test receiver reading + correction factor



### 3.2 RADIATED EMISSION MEASUREMENT

#### 3.2.1 LIMITS OF RADIATED EMISSION MEASUREMENT

FREQUENCY (MHz)	Class A (at 10m)	Class B (at 3m)
	dBuV/m	dBuV/m
30 ~ 88	39.0	40.0
88 ~ 216	43.5	43.5
216 ~ 960	46.5	46.0
Above 960	49.5	54.0

**Notes:**

- (1) The tighter limit applies at the band edges.

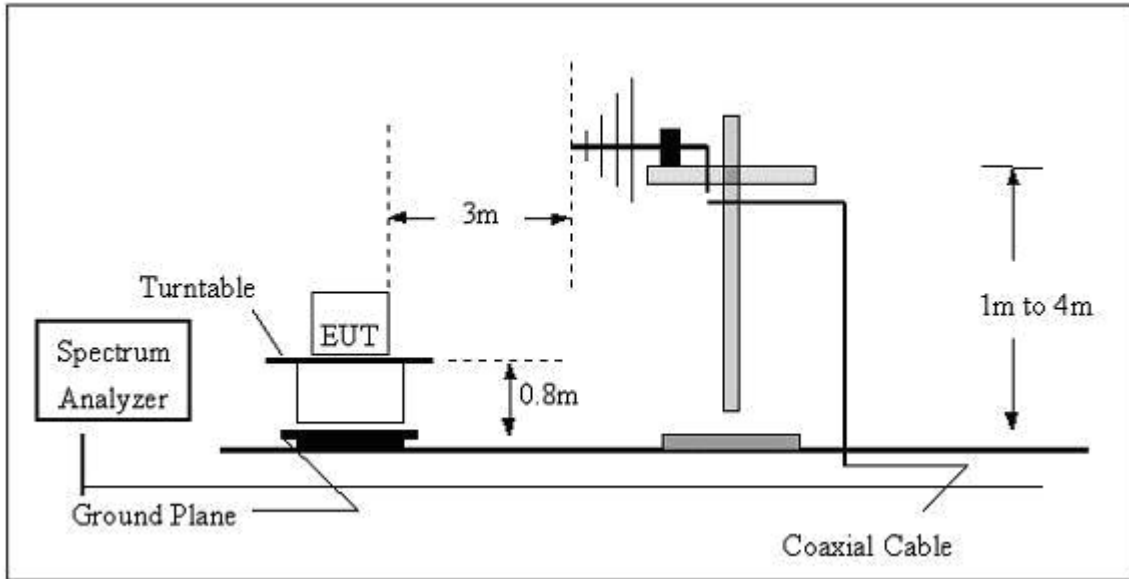
#### 3.2.2 TEST PROCEDURE

- a. The measured distance is 3m.
- b. The EUT was placed on the top of a rotating table 0.8 meters above the ground at a 3 meter open area test site. The table was rotated 360 degrees to determine the position of the highest radiation.
- c. The height of the equipment or of the substitution antenna shall be 0.8 m; the height of the test antenna shall vary between 1 m to 4 m. Both horizontal and vertical polarizations of the antenna are set to make the measurement.
- d. The initial step in collecting conducted emission data is a spectrum analyzer peak detector mode pre-scanning the measurement frequency range. Significant peaks are then marked and then Quasi Peak detector mode re-measured, above 1G Average detector mode will be instead.
- e. If the Peak Mode measured value compliance with and lower than Quasi Peak Mode Limit, the EUT shall be deemed to meet QP(AV) Limits and then no additional QP Mode measurement performed.
- f. For the actual test configuration, please refer to the related Item –EUT Test Photos.

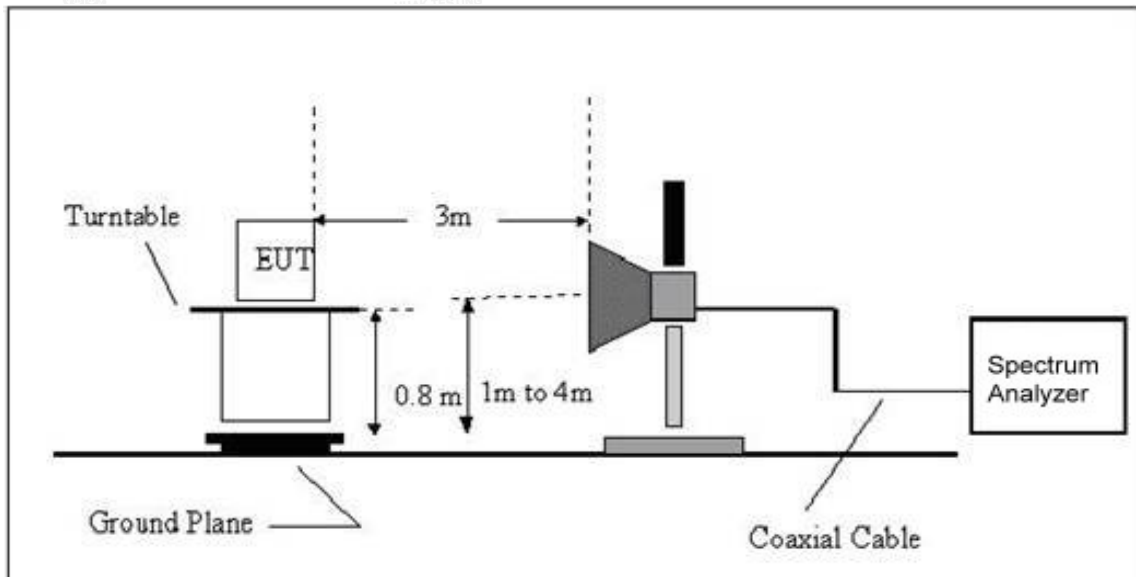


### 3.2.3 TEST SETUP

#### (A) Radiated Emission Test Set-Up Frequency Below 1 GHz



#### (B) Radiated Emission Test Set-Up Frequency Above 1GHz



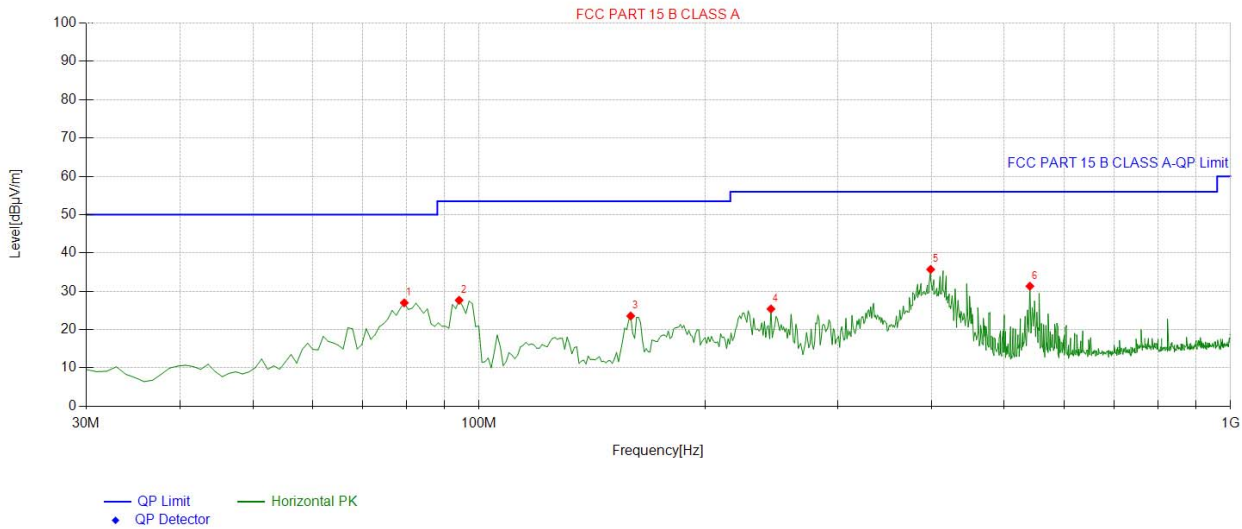
### 3.2.4 EUT OPERATING CONDITIONS

The EUT tested system was configured as the statements of 2.3 Unless otherwise a special operating condition is specified in the follows during the testing.



3.2.5 TEST RESULTS(30MHz~1000MHz)

EUT :	CM5 AI CAMERA	Model Name :	ED-AIC3100
Temperature :	24.2 °C	Relative Humidity :	52%
Pressure :	1010 hPa	Test Date :	2026-04-08
Test Mode :	Mode 1	Polarization :	Horizontal
Test Power :	DC 24V From Adapter		



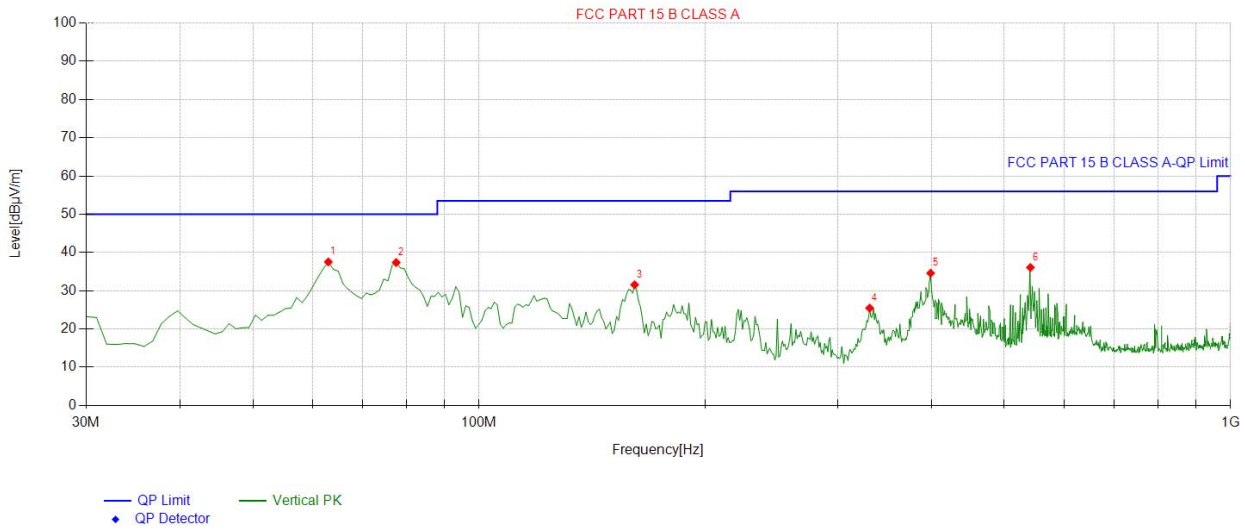
Suspected List									
NO.	Freq. [MHz]	Factor [dB]	Reading [dBµV/m]	Level [dBµV/m]	Limit [dBµV/m]	Margin [dB]	Height [cm]	Angle [°]	Polarity
1	79.51952	-22.81	49.79	26.98	50.00	23.02	100	194	Horizontal
2	94.084084	-22.35	50.01	27.66	53.50	25.84	100	22	Horizontal
3	159.13913	-19.28	42.82	23.54	53.50	29.96	100	213	Horizontal
4	244.58458	-20.98	46.37	25.39	56.00	30.61	100	346	Horizontal
5	398.96896	-18.36	54.06	35.70	56.00	20.30	100	235	Horizontal
6	540.73073	-16.54	47.87	31.33	56.00	24.67	100	48	Horizontal

Final Data List

Remark: Factor = Cable loss + Antenna factor – Pre-amplifier; Level = Reading + Factor; Margin = Limit – Level;



EUT :	CM5 AI CAMERA	Model Name :	ED-AIC3100
Temperature :	24.2 °C	Relative Humidity :	52%
Pressure :	1010 hPa	Test Date :	2026-04-08
Test Mode :	Mode 1	Polarization :	Vertical
Test Power :	DC 24V From Adapter		



Suspected List									
NO.	Freq. [MHz]	Factor [dB]	Reading [dBµV/m]	Level [dBµV/m]	Limit [dBµV/m]	Margin [dB]	Height [cm]	Angle [°]	Polarity
1	63.013013	-19.83	57.37	37.54	50.00	12.46	100	158	Vertical
2	77.577578	-22.65	60.02	37.37	50.00	12.63	100	81	Vertical
3	161.08108	-19.28	50.83	31.55	53.50	21.95	100	285	Vertical
4	331.00100	-19.37	44.83	25.46	56.00	30.54	100	75	Vertical
5	398.96896	-18.36	52.95	34.59	56.00	21.41	100	161	Vertical
6	541.70170	-16.52	52.60	36.08	56.00	19.92	100	53	Vertical

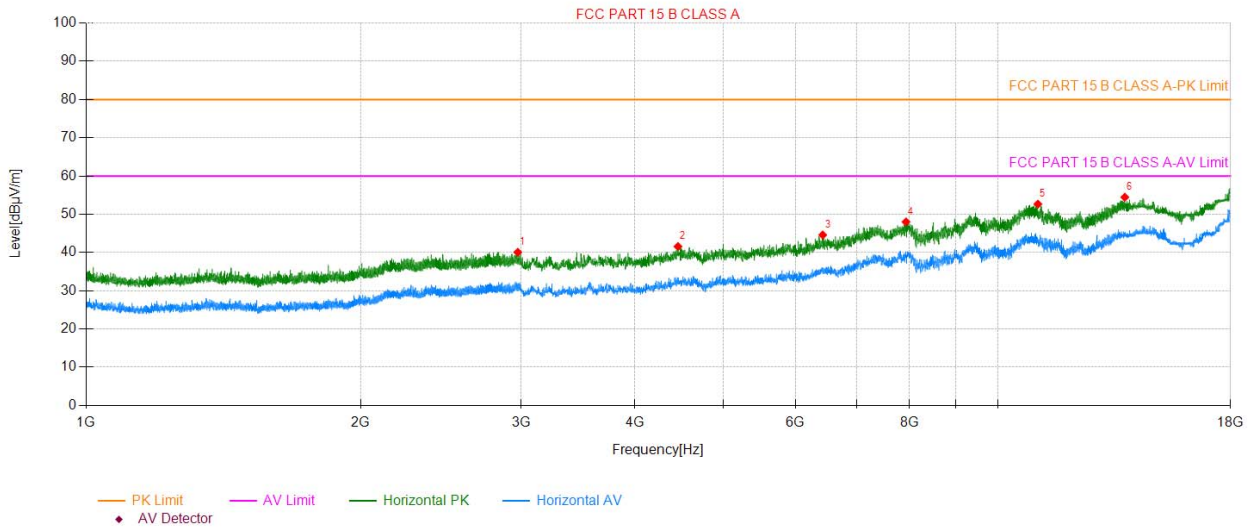
Final Data List

Remark: Factor = Cable loss + Antenna factor – Preamplifier; Level = Reading + Factor; Margin = Limit – Level;



3.2.6 TEST RESULTS(Above 1GHz)

EUT :	CM5 AI CAMERA	Model Name :	ED-AIC3100
Temperature :	24.2 °C	Relative Humidity :	52%
Pressure :	1010 hPa	Test Date :	2026-04-08
Test Mode :	Mode 1	Polarization :	Horizontal
Test Power :	DC 24V From Adapter		

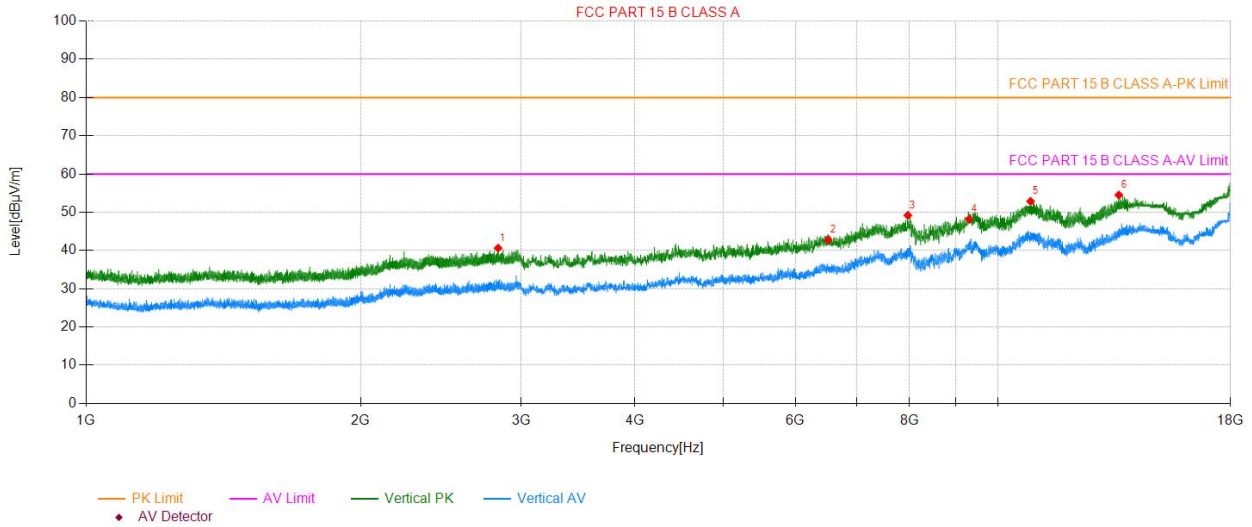


Suspected List									
NO.	Freq. [MHz]	Factor [dB]	Reading [dBµV/m]	Level [dBµV/m]	Limit [dBµV/m]	Margin [dB]	Height [cm]	Angle [°]	Polarity
1	2974.9975	-12.91	52.97	40.06	80.00	39.94	100	330	Horizontal
2	4458.1458	-10.58	52.15	41.57	80.00	38.43	100	220	Horizontal
3	6426.3426	-6.59	51.17	44.58	80.00	35.42	100	40	Horizontal
4	7930.9930	-2.59	50.59	48.00	80.00	32.00	100	200	Horizontal
5	11064.806	2.93	49.72	52.65	80.00	27.35	100	120	Horizontal
6	13781.578	5.70	48.75	54.45	80.00	25.55	100	240	Horizontal

Remark: Factor = Cable loss + Antenna factor – Preamplifier; Level = Reading + Factor; Margin = Limit – Level;



EUT :	CM5 AI CAMERA	Model Name :	ED-AIC3100
Temperature :	24.2 °C	Relative Humidity :	52%
Pressure :	1010 hPa	Test Date :	2026-04-08
Test Mode :	Mode 1	Polarization :	Vertical
Test Power :	DC 24V From Adapter		



Suspected List									
NO.	Freq. [MHz]	Factor [dB]	Reading [dBµV/m]	Level [dBµV/m]	Limit [dBµV/m]	Margin [dB]	Height [cm]	Angle [°]	Polarity
1	2830.9830	-13.49	54.10	40.61	80.00	39.39	100	310	Vertical
2	6516.3516	-6.27	49.04	42.77	80.00	37.23	100	210	Vertical
3	7966.9967	-2.11	51.31	49.20	80.00	30.80	100	240	Vertical
4	9302.1302	-0.70	48.90	48.20	80.00	31.80	100	30	Vertical
5	10863.786	2.62	50.24	52.86	80.00	27.14	100	80	Vertical
6	13577.557	5.26	49.24	54.50	80.00	25.50	100	20	Vertical

Remark: Factor = Cable loss + Antenna factor – Preamplifier; Level = Reading + Factor; Margin = Limit – Level;

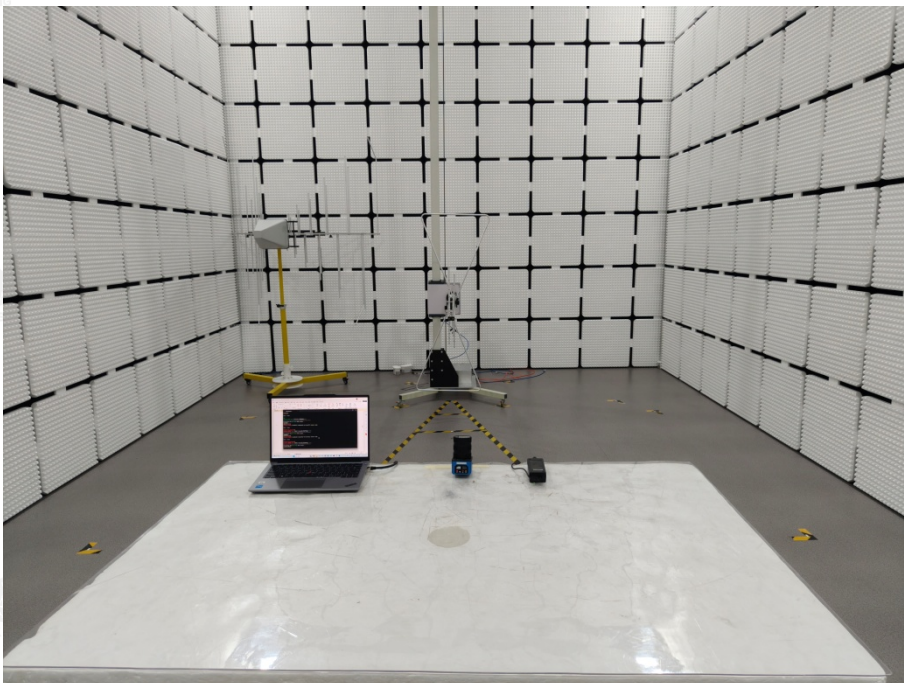


### 4. EUT TEST PHOTO

#### Conducted Emission



#### Radiated Emission



The results shown in this test report refer only to the sample(s) tested unless otherwise stated and the sample(s) are retained for 15 days only. The document is issued by Shenzhen HUAK Testing Technology Co., Ltd., this document cannot be reproduced except in full with our prior written permission.

**ATTACHMENT PHOTOGRAPHS OF EUT**

Photo 1



Photo 2



Photo 3

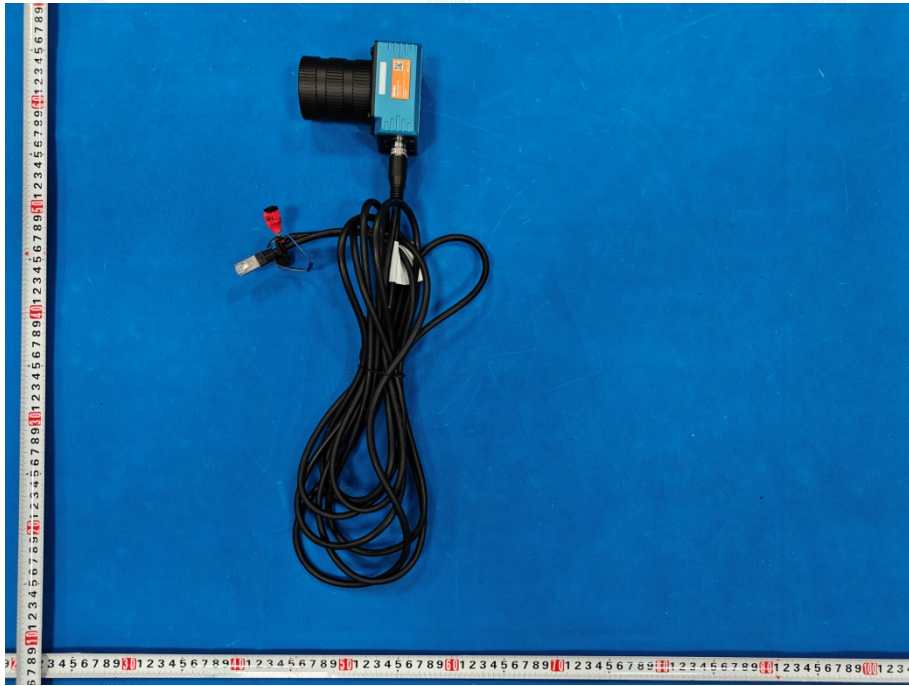


Photo 4

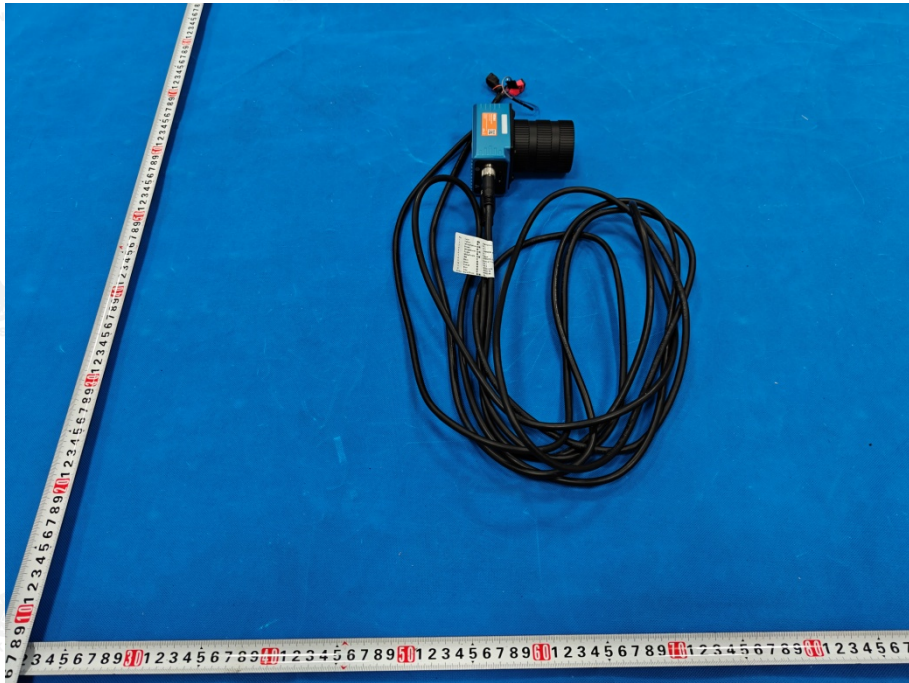


Photo 5

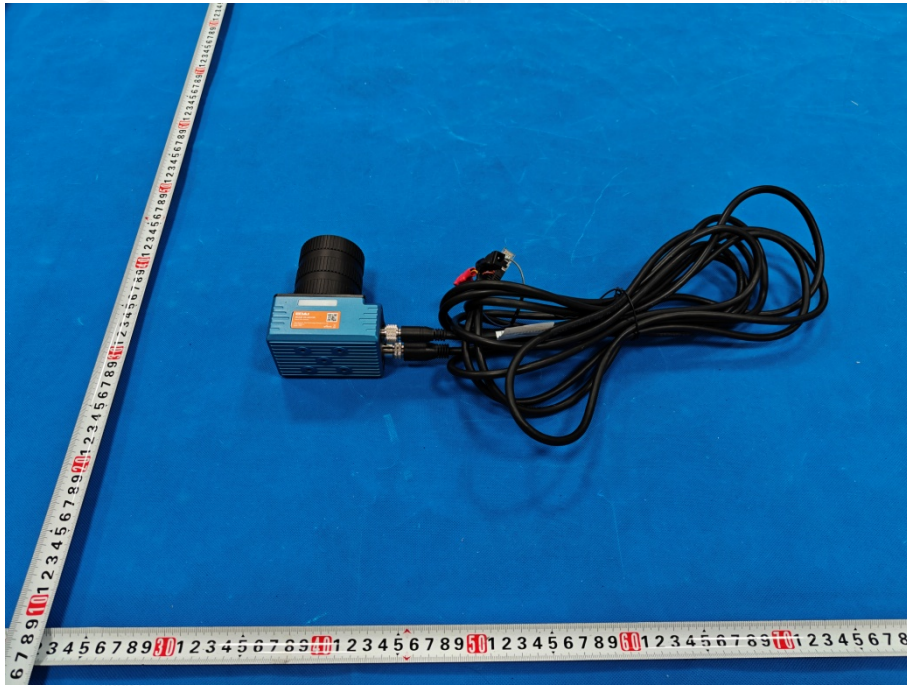


Photo 6

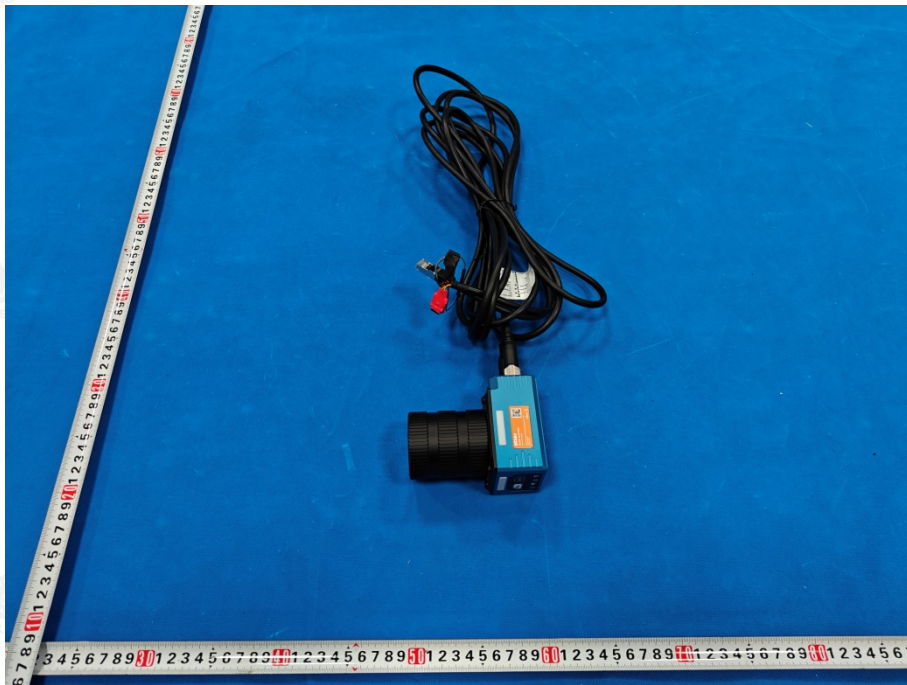


Photo 7



Photo 8

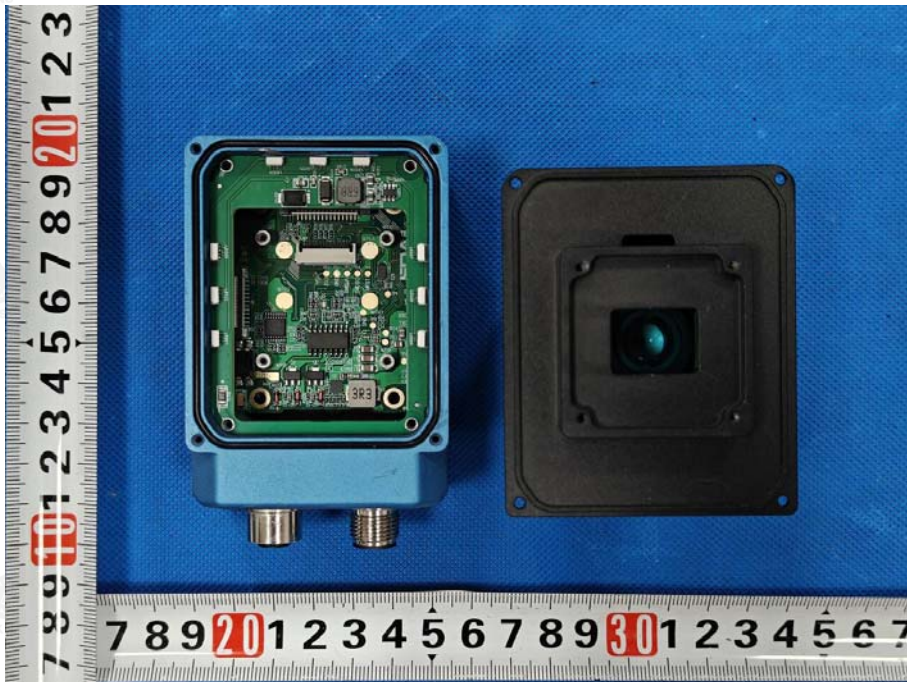


Photo 9

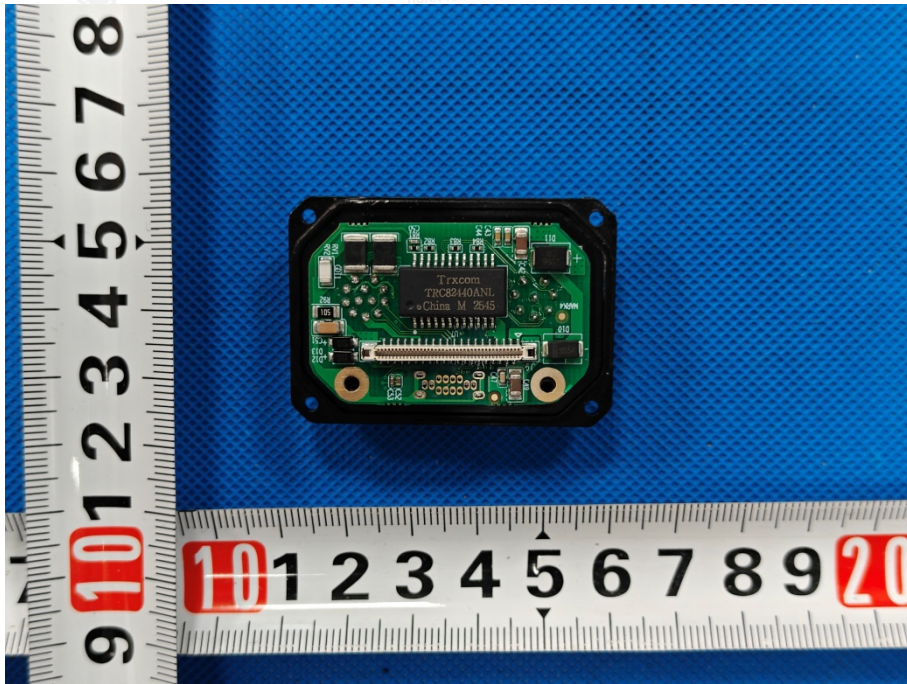


Photo 10



The results shown in this test report refer only to the sample(s) tested unless otherwise stated and the sample(s) are retained for 15 days only. The document is issued by Shenzhen HUAKE Testing Technology Co., Ltd., this document cannot be reproduced except in full with our prior written permission.

Photo 11

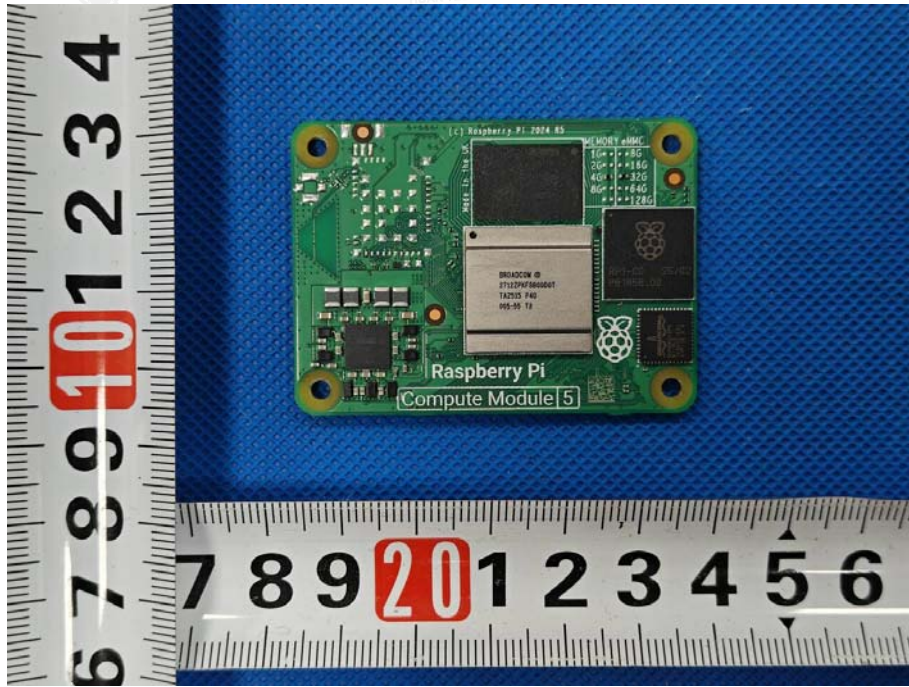
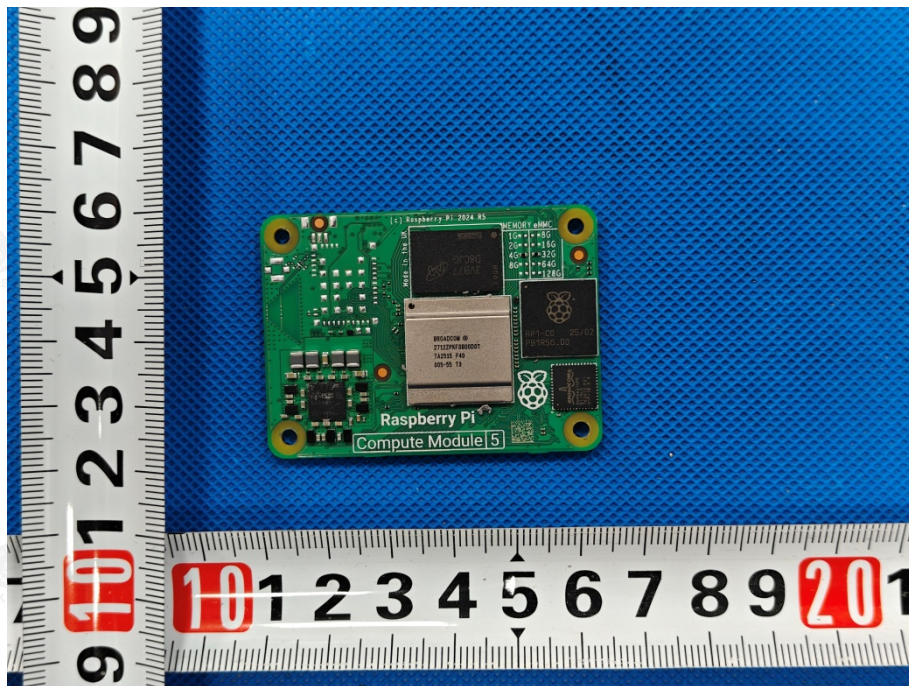


Photo 12



The results shown in this test report refer only to the sample(s) tested unless otherwise stated and the sample(s) are retained for 15 days only. The document is issued by Shenzhen HUAK Testing Technology Co., Ltd., this document cannot be reproduced except in full with our prior written permission.

Photo 13

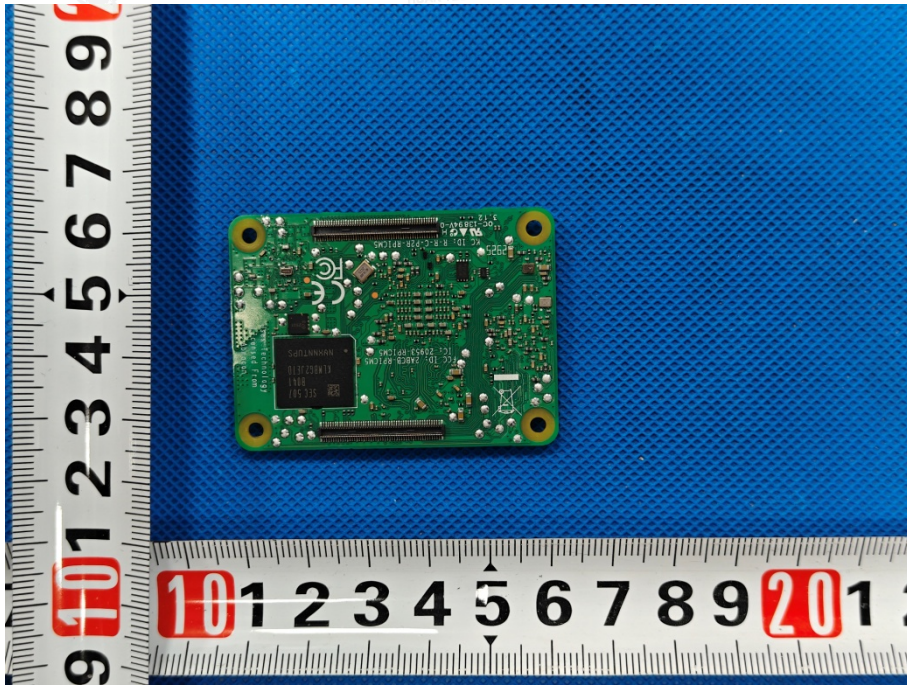


Photo 14

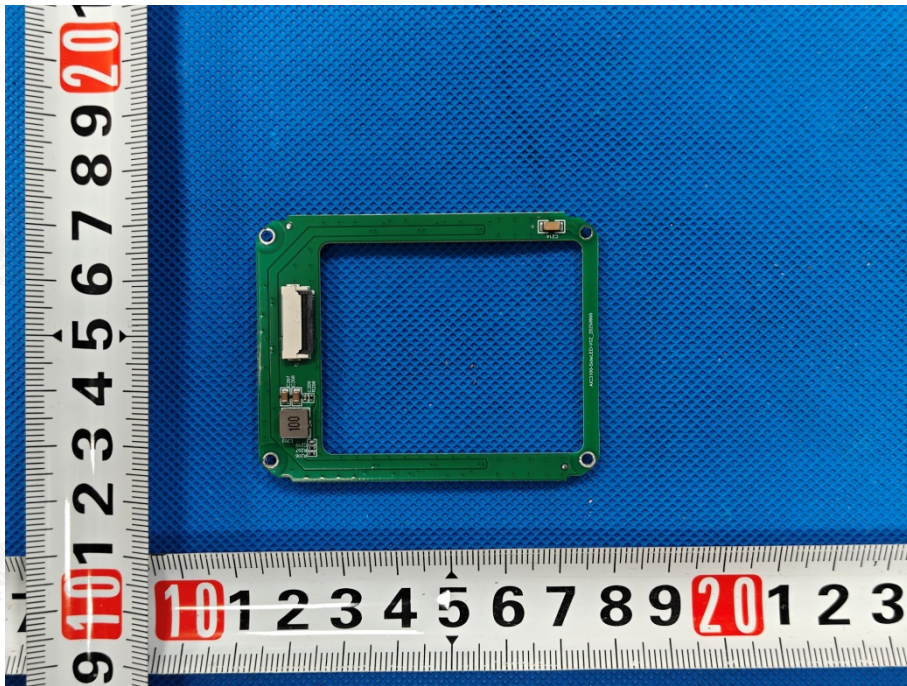


Photo 15

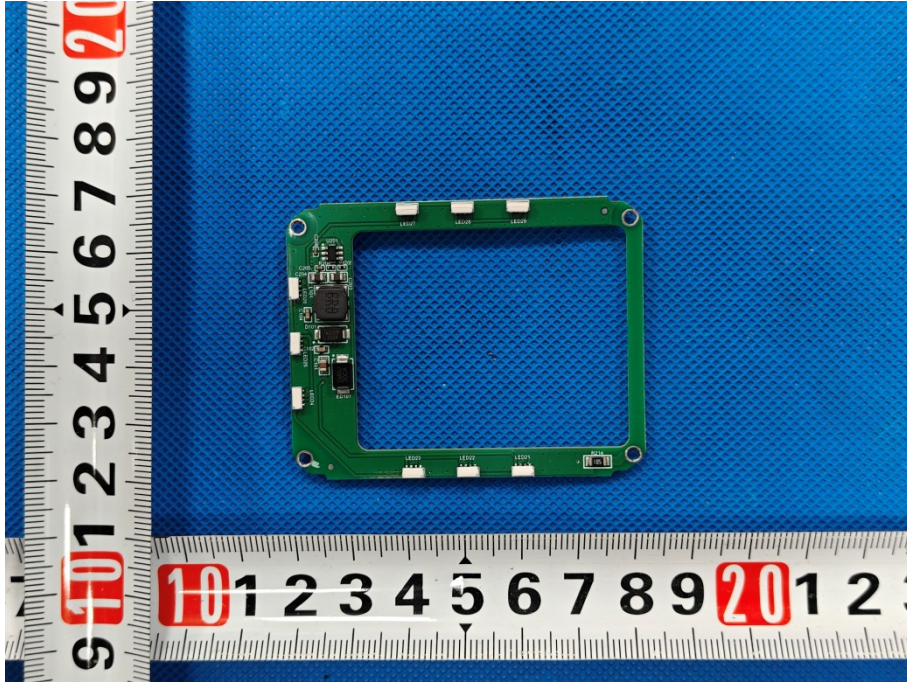
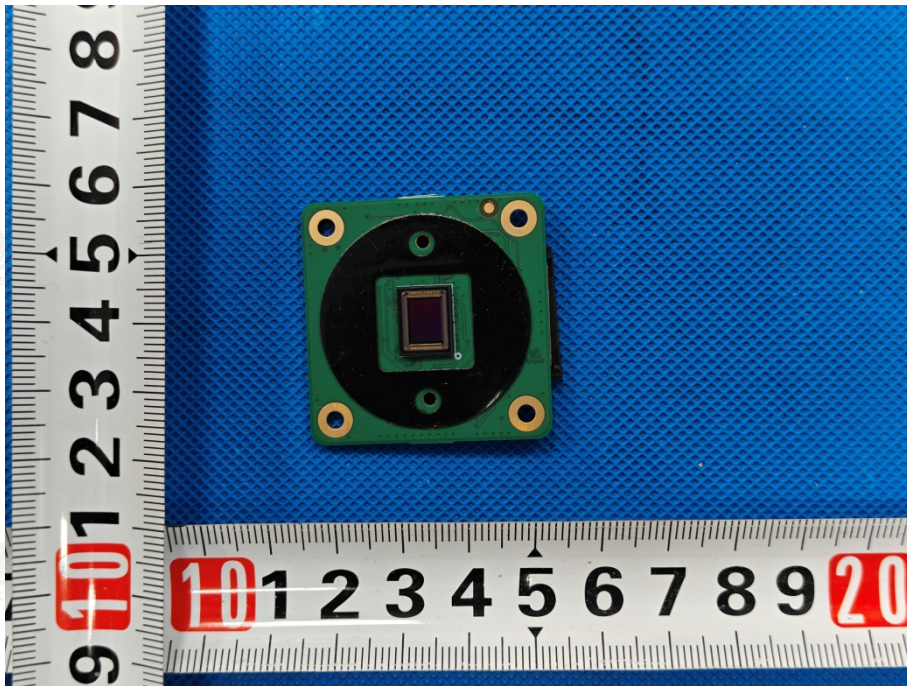


Photo 16



The results shown in this test report refer only to the sample(s) tested unless otherwise stated and the sample(s) are retained for 15 days only. The document is issued by Shenzhen HUAKE Testing Technology Co., Ltd., this document cannot be reproduced except in full with our prior written permission.

Photo 17

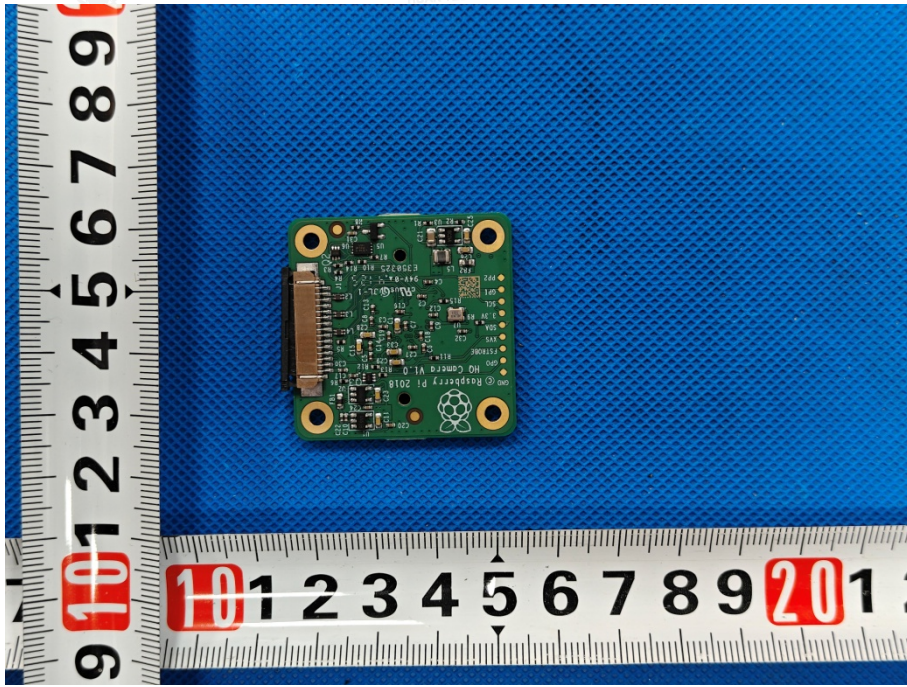


Photo 18



-----End of report-----

The results shown in this test report refer only to the sample(s) tested unless otherwise stated and the sample(s) are retained for 15 days only. The document is issued by Shenzhen HUAK Testing Technology Co., Ltd., this document cannot be reproduced except in full with our prior written permission.

**Shenzhen HUAK Testing Technology Co., Ltd.** Tel.: +86-0755-2302 9901 E-mail: info@huak.com Web.: www.huak.com  
Add.: 1-2/F., Building B2, Junfeng Zhongcheng Zhizao Innovation Park, Heping, Fuhai Street, Bao'an District, Shenzhen, Guangdong, China